



Parking Meter Post

From: **ALLOY CASTINGS CO., INC.**
Quality Aluminum Castings Since 1948

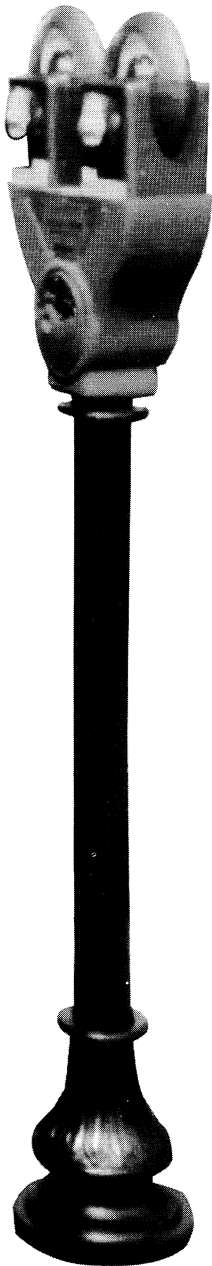
151 West Union Street • East Bridgewater, MA 02333-0473
 Telephone: (508) 378-2541 • FAX: (508) 378-1240
 www.alloycastings.com

Decorative Parking Meter Post

This product slips over an existing parking meter 2 1/2" post and is adjustable to accommodate the height of existing parking meters. This is a great way to dress up your existing meters.

Specifications

- Style:** Washington
- Height:** 31" to 37", adjustable
- Base:** Aluminum alloy 356 heavy wall cast.
9" ± dia.
- Shaft:** Extruded aluminum 1/8" wall thickness.
- Hardware:** (3) 1/4-20 x 3/4 stainless steel headless Allen set screws on top and bottom collars.
- Finish Options:** A wide variety of colors are available using the finest quality paints. Thermostat powder coating is available upon request.



**Washington
 Decorative
 Parking Meter**

